



LUMSDEN CORPORATION

Wiremation

P.O. BOX 4642, LANCASTER, PA 17604 -10 ABRASO STREET, LANCASTER, PA 17601

(717)394-6871 FAX (717)394-1640

WWW.LUMSDENCORP.COM 800-367-3664

The Wiremation division of Lumsden Corporation is proud to unveil a NEW product. Introducing stainless steel sprockets for use with woven wire conveyor belting. The chart below lists the various different belt specifications in which the NEW Wiremation sprockets are available.

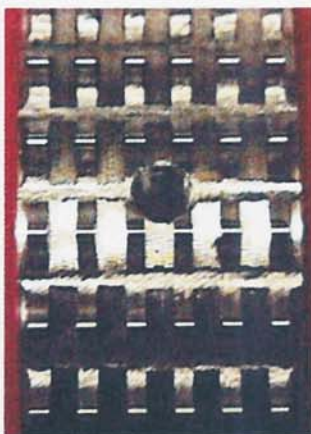
Wiremation sprockets are ideal for positive drive conveying systems in food processing, baking and canning. All sprockets are manufactured in 303 stainless steel, and come complete with a standard keyway and one set screw.

Traxx Rite Positive Drive Belt System

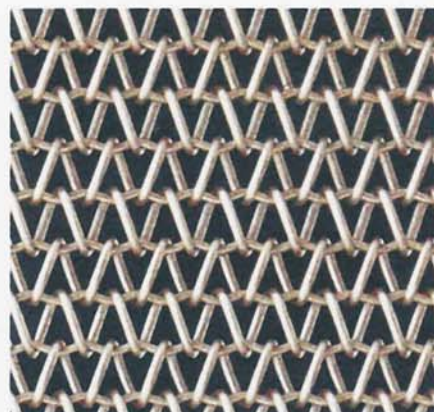
Belt Specification	Diameter*	Bore Sizes Available	Approximate Opening	Open Area %	Minimum Nose Bar Diameter
PB18-16-16	3.00"	1.00" - 1.75"	.604" x .687"	82.9	1.432"
PB30-24-17	4.00"	1.00" - 1.75"	.346" x .446"	77.2	.955"
PB30-31-16	1.55"	.75"	.337" x .324"	70.5	.739"
PB42-36-18	2.27"	.75" - 1.50"	.239" x .286"	71.8	.636"
PB48-52-17	3.00"	1.00" - 1.75"	.196" x .177"	60.1	.441"
PB60-48-18/20	2.00"	.75" - 1.25"	.165" x .203"	67.0	.477"
PB72-68-18	2.80"	.75" - 1.75"	.120" x .129"	52.7	.337"

* Contact sales department for other diameter sizes.

Sprocket Teeth



Wiremation Belting



Sprocket Side View

